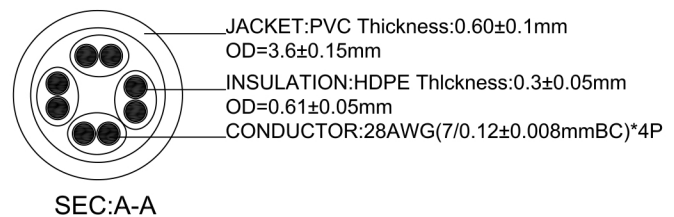
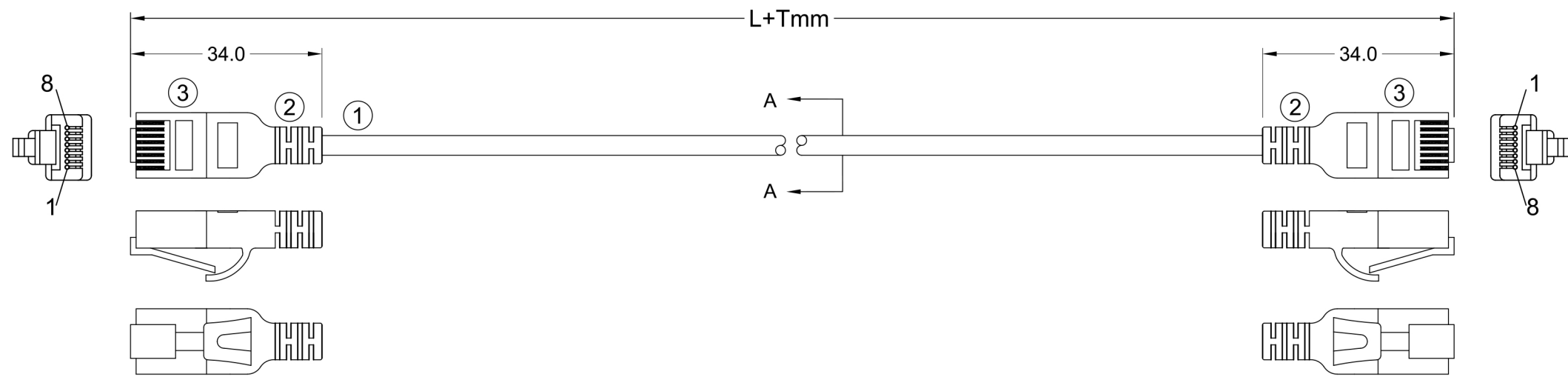


NOTE: ALL MATERIAL COMPLIANT ROHS STANDARD

REVISION INFORMATION			
Rev.	Rev. Date	Modified By	Brief Description



SEC:A-A

orange 1	green 2
white/orange	white/orange
blue 3	brown 4
white/blue	white/brown

PINOUT		
P1	WIRE	P2
1	WHITE/ORANGE	1
2	ORANGE	2
3	WHITE/GREEN	3
6	GREEN	6
5	WHITE/BLUE	5
4	BLUE	4
7	WHITE/BROWN	7
8	BROWN	8

PART NO.	LENGTH(FT)	TOLERANCE
100250	0.5	± 15mm
100251	1	± 15mm
100252	1.5	± 15mm
100253	2	± 15mm
100254	3	± 15mm
100256	5	± 20mm
100258	7	± 30mm
100261	10	± 30mm
100263	15	± 30mm
100264	20	± 60mm
100265	30	± 60mm
100267	50	± 80mm

an INFINIT® brand

DRAWN BY	DATE: 2018/11/06	Title: Cat6a Slim Patch Cable with Boot	
CHECKED BY	SHEET 1 of 1	Part No: 670-XXX	
APPROVED BY	SCALE 1:1	REV. 00	UNIT: mm

NO.	PART NAME	SPECIFICATION DESCRIPTION	QTY	UNIT
③	RJ45 PLUG	8P8C 50U" GOLD PLATED TWO-PIECE PLUG.		
②	MOLDED	PVC SHORT MOLDED BOOT		
①	CABLE	CAT6A UTP 4P/28AWG(7/0.12±0.008MM BC) OD=3.6±0.15mm		